

The 2024 KKF-Inspired

(FREEHAND)

Sharpening Gear Guide

2024-07-27 v0.3.1

1

MY FIRST
WHETSTONE
pick any one

JAPANESE		AMERICAN		DIAMOND	
SYNTHETIC		SYNTHETIC	NATURAL		
SHAPTON KUROMAKU PRO 1000 <i>Splash & Go · AI/Ox</i>	NANIWA PRO CHOSERA 400 <i>Splash & Go · AI/Ox</i>	NORTON INDIA FINE & COARSE <i>Splash & Go · Oil · AI/Ox</i>	SOFT ARKANSAS <i>Splash & Go · Water or Oil · Si</i>	ULTRASHARP DIAMOND 300 · 600 · 1200 <i>Splash & Go · Water · C</i>	SHARPAL DUAL GRIT 325 & 1200 <i>Splash & Go · Water · C</i>

FEEDBACK (A)



SHARPIE

2

ONE IS NOT
ENOUGH!

JAPANESE SYNTHETIC			AMERICAN NATURAL	EUROPEAN NATURAL	DIAMOND
SHAPTON GLASS OR SHAPTON ROCKSTAR (formulations are said to be essentially identical) <i>Splash & Go · AI/Ox</i>	NANIWA PRO CHOSERA 800	KING DELUXE 1000 <i>Soaking · AI/Ox</i>	CERAX 1000 <i>Soaking · AI/Ox</i>	HARD ARKANSAS <i>Splash & Go · Water or Oil · Si</i>	BELGIAN BLUE WHETSTONE <i>Splash & Go · Water · Garnets</i>

3

MY FIRST
FLATTENER AKA
LAPPING STONE



ATOMA 140 (available with handle)

FEEDBACK (B)



LOUPE

4

COARSER

JAPANESE SYNTHETIC		AMERICAN SYNTHETIC			AMERICAN NATURAL	CHINESE
SP120 · SG220 <i>Splash & Go · Water · AI/Ox</i>	SUEHIRO DEBADO 180	THE GRINDER STONE 80 <i>Splash & Go · Water · SiC</i>	NORTON CRYSTOLON 120 · 180 · 320 <i>SiC</i>	BARYONYX MANTICORE <i>Splash & Go · Water · SiC</i>	BARYONYX AMERICAN MUTT <i>SiC, AI/Ox, C</i>	WASHITA (Lily White variety pictured) <i>Splash & Go · Oil preferred · Si</i>

How do I flatten coarse stones?



60 GRIT SILICON CARBIDE POWDER OR SANDPAPER ON GLASS

5

FINER

JAPANESE SYNTHETIC		AMERICAN NATURAL	EUROPEAN NATURAL	6	
					If your stones came with holders, you may defer this purchase.
SG/SP 4k, 8k, 16k	GESSHIN 6000 Ceramic or others <i>Soaking</i>	NANIWA PRO CHOSERA 3000	TRANSLUCENT OR BLACK ARKANSAS <i>Splash & Go · Oil preferred · Si</i>	COTICULE <i>Splash & Go · Water · Garnets</i>	

6

STONE HOLDER
& SINK BRIDGE

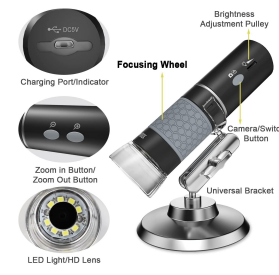


SHAPTON GLASS FIELD HOLDER

GENERIC STONE HOLDER

NANIWA SINK BRIDGE

FEEDBACK (C)



MICROSCOPE

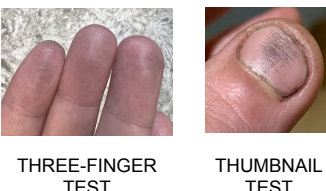
THEORY

THEORY

Apexing usually involves raising a burr. Deburr with edge-leading (higher-angle) strokes. Refine the apex.				7	LEATHER / DENIM / PAPER	
				STROPS		
KNIFE STEEL NERDS KNIFE STEEL NERDS.COM	SCIENCE OF SHARP.COM	KNIFE DEBURRING VADIM KRAICHUK	PETE NOWLAN: Knife Sharpening demonstrating pressure variances https://youtu.be/GtatnyLz8YM		COW · HORSE · KANGAROO TAIL HUMAN SKIN (IDEALLY YOUR OWN)	

8		METAL OXIDE	DIAMOND
STROP PASTE			
	CHROMIUM OXIDE	DIAMOND EMULSION	

FEEDBACK (D)



THREE-FINGER TEST THUMB NAIL TEST

AVOID

AVOID

THE AMAZON BEGINNER STONE, or, THE POWER OF MARKETING		TRAVEL KIT	JAPANESE SYNTHETIC	DIAMOND
	This distinctive blue-and-white double-sided 1000/6000 stone is heavily marketed on Amazon toward novices, under many different brands. Unfortunately, it dishes very quickly and has a much lower grit than indicated. Beginners are likely to become frustrated. For the price, why not stones under (1) or (2) above?			
		opportunity to learn in-hand sharpening	SHAPTON GLASS STONE SEVEN 500	SUEHIRO CAMPING STONE 500

TRAVEL KIT

opportunity to learn in-hand sharpening

JAPANESE SYNTHETIC

DIAMOND

QUICK TOUCH-UP

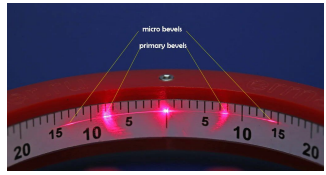
QUICK TOUCH-UP

CERAMIC	STEEL	DIAMOND	DIAMOND			
MERCER CULINARY CERAMIC HONING STEEL	DICKORON MICRO	LANSKY DIAMOND SHARP STICK	SHAPTON GLASS DIAMOND LAPPING PLATE	DMT DIA-FLAT	NANO-HONE NL-4	NANO-HONE NL-6

MY NEXT FLATTENER

MY NEXT FLATTENER

FEEDBACK (G)



GONIOMETER

THE J-NAT RABBIT HOLE

“Are there only two?”
“Haha no.”

JAPANESE NATURAL		DIAMOND	
AIZU	OHIRA RENGE SUITA	DIAMOND (generally for tool steels generally anything with >4% vanadium or other metal carbides)	VITRIFIED DIAMOND STONE FSK 400 pictured

DIAMOND

DIAMOND (generally for tool steels generally anything with >4% vanadium or other metal carbides)

DIAMOND

DIAMOND

FEEDBACK (H)



BESS TESTER